

RevproTM

Can Liners Made With
Certified Recycled Resin

Revolution[®]
redefine possible.



Tough as nails, Green as grass.

RevPro™ certified recycled content can liners for every type of commercial or industrial need



High Performance, Exceptional Value

RevPro liners deliver high performance at an exceptional value

Quality You Can Count On

Made with the highest quality, recycled resin

Achieve Your Sustainability Goals

Certified eco-friendly to help you reduce your carbon footprint and meet your sustainability goals

Flexible Order Quantities

Small business-friendly with low order quantity requirements (LTL)

Stocking Programs Available

Qualified customers may be eligible for unique stocking programs



Made with Certified Recycled Content

RevPro can liners are third-party certified by SCS Global Services to contain a minimum of 84-95% recycled content, ensuring peace of mind that you're getting the highest quality product made with eco-friendly materials.



PREMIUM CAN LINER PUT UP

- Coreless rolls
- Cored rolls
- Flat pack

CONSTRUCTION OF PREMIUM CAN LINERS

- Star, flat, or gusset bottom seal
- Tubular design — no side seam
- 1 mil to 6 mil

PACKAGING

- Strong corrugated boxes
- Customized labeling
- Pallets are delivered with a dust cover

COLORS & PRINTING

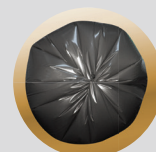
- Any color
- Tint or opaque
- Random print

Seal Styles



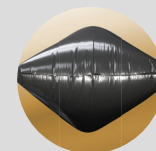
STAR SEAL

Star seal can liners are manufactured by folding the bottom of the liner over twice and then sealing it. These can liners will virtually eliminate leaks, and conform better to the shape of the waste receptacle by spreading refuse around the can liner.



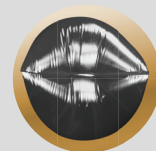
GUSSET SEAL

Gusset sealed is a flat style can liner that is manufactured with both sides tucked in to form gussets. The outer edges of the can liner where there are indentations is sealed with four layers of film, while the middle is sealed with only two layers. Can liners made with gussets work best in rectangle-shaped cans.

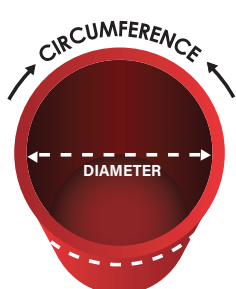


FLAT SEAL

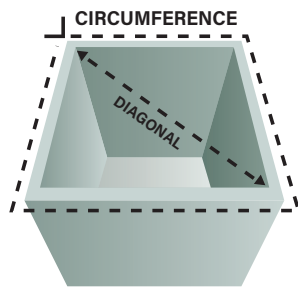
A Flat seal can liner is manufactured by simply sealing the bottom edge. Can liners made with this type of seal are leak-proof and do not compromise the length of the can liner. Can liners made with a flat seal do not conform as well to the waste receptacle.



Measuring Guide



Circumference = Diameter multiplied by 3.14



Circumference = Sum of all 4 sides added together

BAG WIDTH: To calculate the proper width of the can liner for your container, simply divide the circumference of your container by 2

SQUARE CONTAINER CIRCUMFERENCE:
Circumference = sum of all 4 side added together

ROUND CONTAINER CIRCUMFERENCE:
Circumference = diameter multiplied by 3.14

BAG LENGTH: (For both square and round containers)
Add the height of the container, plus 4 - 5 inches for overhang

Optimal liner sizes for the most common capacity cans

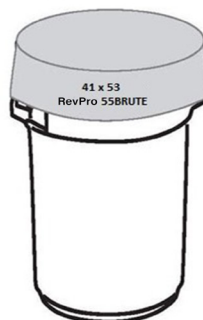
MOST COMMON CAPACITY CANS

		NEW ITEM #	PRODUCT CODE	DIMENSIONS (IN)	GA (MIL)	COLOR	BAGS/CASE	CASE/PALLET	NET CASE WT (LBS)	RECYCLED CONTENT (UP TO %)
	Wastebasket Medium 7-10 Gallon	DT222475N	DT	22x24	0.75	N	300-6x50	105	8.9	20
	Slim Jim® 23 Gallon	CS294411BK	CS	29x44	1.10	BK	150-10x15	88	14.0	84
		CS294414BK	CS	29x44	1.40	BK	150-10x15	72	17.9	84
		PL284558N	PL	28x45	0.58	N	200-8x25	105	12.2	20
		PL284570N	PL	28x45	0.70	N	250-10x25	72	14.7	20
		PL304359N	PL	30x43	0.59	N	250-10x25	105	12.7	20
		PL284558BK	PL	28x45	0.58	BK	250-10x25	105	12.2	70
		PL284570BK	PL	28x45	0.70	BK	250-10x25	72	14.7	70
		PL304359BK	PL	30x43	0.59	BK	250-10x25	105	12.7	70
		PL284570BU	PL	28x45	0.70	BU	250-10x25	72	14.7	20
		PL284570GN	PL	28x45	0.70	GN	250-10x25	72	14.7	20
DT283890N	DT	28.5x38	0.90	N	150-6x25	105	10.3	20		
	32 Brute® 32 Gallon	CS334411BK	CS	33x44	1.10	BK	100-10x10	112	10.6	84
		CS334414BK	CS	33x44	1.40	BK	100-10x10	88	13.6	84
		DT333870N	DT	33x38	0.70	N	150-6x25	105	9.3	20
	44 Brute® 44 Gallon	CS375011BK	CS	37x50	1.10	BK	100-10x10	88	13.6	84
		CS375014BK	CS	37x50	1.40	BK	100-10x10	80	17.3	84
		PL364745N	PL	36x47	0.45	N	250-10x25	105	12.7	20
		PL364759N	PL	36x47	0.59	N	250-10x25	72	16.6	20
		PL364770N	PL	36x47	0.70	N	200-8x25	105	15.8	20
		PL364745BK	PL	36x47	0.45	BK	250-10x25	105	12.7	30
		PL364759BK	PL	36x47	0.59	BK	250-10x25	72	16.6	70
		PL364770BK	PL	36x47	0.70	BK	250-10x25	105	15.8	70
		PL364770GN	PL	36x47	0.70	GN	200-8x25	105	15.8	20
DT364290N	DT	36.5x42.5	0.90	N	100-4x25	105	9.7	20		
	55 Brute® 55 Gallon	CS415311BK	CS	41x53	1.10	BK	100-10x10	80	15.9	84
		CS415314BK	CS	41x53	1.40	BK	100-10x10	64	20.3	84
		PL415270N	PL	41x52	0.70	N	100-4x25	105	9.9	20
		PL415270BK	PL	41x52	0.70	BK	100-4x25	105	9.9	70
		DT404290N	DT	40.5x42.5	0.90	N	100-4x25	105	10.8	20

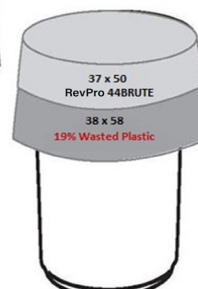
- CS Coreless/Star Seal
- DT Draw Tape
- PL ProLite
- BK Black
- N Natural
- BU Blue
- GN Green

Brute, Glutton and Slim Jim are registered trademarks of Rubbermaid

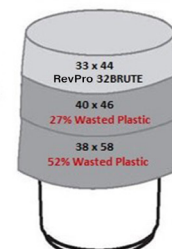
55 Gallon Container



44 Gallon Container



32 Gallon Container



23 Gallon SlimJim Container



RevPro Max

Coreless Can Liners



	NEW ITEM #	OLD ITEM #	PRODUCT CODE	DIMENSIONS (IN)	GA (MIL)	COLOR	CAPACITY (GAL)	BAGS/CASE	CASE/PALLET	NET CASE WT (LBS)	RECYCLED CONTENT (UP TO %)
	CS242310BK	242310B	CS	24x23	1.00	BK	7-10	500-20x25	72	18.4	84
	CS243210BK	243210B	CS	24x32	1.00	BK	12-18	500-20x25	56	25.6	84
RF	CS294411BK	SLIMJIM-L	CS	29x44	1.10	BK	SlimJim®	150-10x15	88	14.0	84
RF	CS294414BK	SLIMJIM-H	CS	29x44	1.40	BK	SlimJim®	150-10x15	72	17.9	84
	CS303610BK	303610B	CS	30x36	1.00	BK	20-30	250-10x25	80	18.0	84
	CS333910BK	TM333910BR	CS	33x39	1.00	BK	33	100-10x10	112	8.6	84
	CS333912BK	333915B	CS	33x39	1.20	BK	33	100-10x10	112	10.3	84
	CS333915BK	TM333915BR	CS	33x39	1.50	BK	33	100-10x10	112	12.9	84
	CS333916BK	333920B	CS	33x39	1.60	BK	33	100-10x10	88	13.7	84
	CS333920BK	TM333920BR	CS	33x39	2.00	BK	33	100-10x10	80	17.2	84
RF	CS334411BK	32BRUTE-L	CS	33x44	1.10	BK	32 Brute®	100-10x10	112	10.6	84
RF	CS334414BK	32BRUTE-H	CS	33x44	1.40	BK	32 Brute®	100-10x10	88	13.6	84
RF	CS375011BK	44BRUTE-L	CS	37x50	1.10	BK	44 Brute®	100-10x10	88	13.6	84
RF	CS375014BK	44BRUTE-H	CS	37x50	1.40	BK	44 Brute®	100-10x10	80	17.3	84
	CS404610BK	TM404610BR	CS	40x46	1.00	BK	40-45	100-10x10	88	12.3	84
	CS404612BK	404615B	CS	40x46	1.20	BK	40-45	100-10x10	88	14.7	84
	CS404615BK	TM404615BR	CS	40x46	1.50	BK	40-45	100-10x10	80	18.4	84
	CS404616BK	404620B	CS	40x46	1.60	BK	40-45	100-10x10	72	19.6	84
	CS404620BK	TM404620BR	CS	40x46	2.00	BK	40-45	100-10x10	56	24.5	84
RF	CS415311BK	55BRUTE-L	CS	41x53	1.10	BK	55 Brute®	100-10x10	80	15.9	84
RF	CS415314BK	55BRUTE-H	CS	41x53	1.40	BK	55 Brute®	100-10x10	64	20.3	84
	CS434710BK	TM434710BR	CS	43x47	1.00	BK	56	100-10x10	88	13.5	84
	CS434712BK	434715B	CS	43x47	1.20	BK	56	100-10x10	80	16.2	84
	CS434715BK	TM434715BR	CS	43x47	1.50	BK	56	100-10x10	64	20.2	84
	CS434716BK	434720B	CS	43x47	1.60	BK	56	100-10x10	64	21.6	84
	CS434720BK	TM434720BR	CS	43x47	2.00	BK	56	100-10x10	48	26.9	84
	CS385810BK	TM385810BR	CS	38x58	1.00	BK	60	100-10x10	80	14.7	84
	CS385812BK	385815B	CS	38x58	1.20	BK	60	100-10x10	80	17.6	84
	CS385815BK	TM385815BR	CS	38x58	1.50	BK	60	100-10x10	64	22.0	84
	CS385816BK	385820B	CS	38x58	1.60	BK	60	100-10x10	56	23.5	84
	CS385820BK	TM385820BR	CS	38x58	2.00	BK	60	100-10x10	48	29.4	84
	CS465015BK	TM465015BR	CS	46x50	1.50	BK	62	100-10x10	64	23.0	84

RF RevPro Fit

- CS Coreless/Star Seal
- BK Black

Brute, Glutton and Slim Jim are registered trademarks of Rubbermaid



RevPro Max

Flat Pack Can Liners



NEW ITEM #	OLD ITEM #	PRODUCT CODE	DIMENSIONS (IN)	GA (MIL)	COLOR	CAPACITY (GAL)	BAGS/CASE	CASE/PALLET	NET CASE WT (LBS)	RECYCLED CONTENT (UP TO %)
FS242410BK	FP6-2424XH	FS	24x24	1.00	BK	7-10	500	80	19.2	84
FS243210BK	FP6-2432XH	FS	24x32	1.00	BK	12-18	500	64	25.6	84
FS303610BK	FP6-3036XH	FS	30x36	1.00	BK	20-30	250	80	18.0	84
FS303615BK	TM303615B	FS	30x36	1.50	BK	20-30	100	88	10.8	84
FS333910BK	TM333910B	FS	33x39	1.00	BK	33	100	112	8.6	84
FS333912BK	FP6-333915B	FS	33x39	1.20	BK	33	100	112	10.3	84
FS333915BK	TM333915B	FS	33x39	1.50	BK	33	100	112	12.9	84
FS333916BK	FP6-333920B	FS	33x39	1.60	BK	33	100	88	13.7	84
FS333920BK	TM333920B	FS	33x39	2.00	BK	33	100	80	17.2	84
FS404610BK	TM404610B	FS	40x46	1.00	BK	40-45	100	88	12.3	84
FS404612BK	FP6-404615B	FS	40x46	1.20	BK	40-45	100	88	14.7	84
FS404615BK	TM404615B	FS	40x46	1.50	BK	40-45	100	80	18.4	84
FS404616BK	FP6-404620B	FS	40x46	1.60	BK	40-45	100	64	19.6	84
FS404620BK	TM404620B	FS	40x46	2.00	BK	40-45	100	56	24.5	84
FS434710BK	TM434710B	FS	43x47	1.00	BK	56	100	88	13.5	84
FS434712BK	FP6-434715B	FS	43x47	1.20	BK	56	100	80	16.2	84
FS434715BK	TM434715B	FS	43x47	1.50	BK	56	100	64	20.2	84
FS434716BK	FP6-434720B	FS	43x47	1.60	BK	56	100	64	21.6	84
FS434720BK	TM434720B	FS	43x47	2.00	BK	56	100	48	26.9	84
FS385810BK	TM385810B	FS	38x58	1.00	BK	60	100	80	14.7	84
FS385812BK	FP6-385815B	FS	38x58	1.20	BK	60	100	80	17.6	84
FS385815BK	TM385815B	FS	38x58	1.50	BK	60	100	64	22.0	84
FS385816BK	FP6-385820B	FS	38x58	1.60	BK	60	100	56	23.5	84
FS385820BK	TM385820B	FS	38x58	2.00	BK	60	100	48	29.4	84
FS465015BK	TM465015B	FS	46x50	1.50	BK	62	100	64	23.0	84

- FS Flat Pack/Star Seal
- BK Black

Brute, Glutton and Slim Jim are registered trademarks of Rubbermaid



RevPro Lite

Coreless Can Liners



NEW ITEM #	PRODUCT CODE	DIMENSIONS (IN)	GA (MIL)	GA (MIC)	COLOR	CAPACITY (GAL)	BAGS/CASE	CASE/PALLET	NET CASE WT (LBS)	DRYLOAD RATING (LBS)	RECYCLED CONTENT (UP TO %)
PL222530N	PL	22x25	0.30	7.6	N	7-10	1000-20x50	72	11.0	36	20
PL222545N	PL	22x25	0.45	11.4	N	7-10	500-10x50	105	8.3	44	20
PL242430N	PL	24x24	0.30	7.6	N	7-10	1000-20x50	72	11.5	36	20
PL233130N	PL	23x31	0.30	7.6	N	12-18	1000-20x50	72	14.3	37	20
PL233145N	PL	23x31	0.45	11.4	N	12-18	500-10x50	105	10.7	45	20
PL243230N	PL	24x32	0.30	7.6	N	12-18	1000-20x50	72	15.4	36	20
PL303630N	PL	30x36	0.30	7.6	N	20-30	500-20x25	105	10.8	36	20
PL303635N	PL	30x36	0.35	8.9	N	20-30	250-10x25	105	6.3	36	20
PL303645N	PL	30x36	0.45	11.4	N	20-30	250-10x25	105	8.1	46	20
PL303659N	PL	30x36	0.59	15.0	N	20-30	250-10x25	105	10.6	55	20
PL303670N	PL	30x36	0.70	17.8	N	20-30	200-8x25	105	10.1	73	20
RF PL284558N	PL	28x45	0.58	14.7	N	Slim Jim®	250-10x25	105	12.2	55	20
RF PL284570N	PL	28x45	0.70	17.8	N	Slim Jim®	250-10x25	72	14.7	64	20
PL333945N	PL	33x39	0.45	11.4	N	33	250-10x25	105	9.7	46	20
PL333959N	PL	33x39	0.59	15.0	N	33	250-10x25	72	12.7	59	20
PL333970N	PL	33x39	0.70	17.8	N	33	150-6x25	105	9.0	73	20
RF PL304359N	PL	30x43	0.59	15.0	N	Slim Jim® w/ handles	250-10x25	105	12.7	59	20
RF PL364745N	PL	36x47	0.45	11.4	N	44 Brute®	250-10x25	105	12.7	46	20
RF PL364759N	PL	36x47	0.59	15.0	N	44 Brute®	250-10x25	72	16.6	59	20
RF PL364770N	PL	36x47	0.70	17.8	N	44 Brute®	200-8x25	105	15.8	73	20
PL404645N	PL	40x46	0.45	11.4	N	40-45	250-10x25	72	13.8	55	20
PL404659N	PL	40x46	0.59	15.0	N	40-45	250-10x25	72	18.1	64	20
PL404670N	PL	40x46	0.70	17.8	N	40-45	100-4x25	105	8.6	72	20
PL434759N	PL	43x47	0.59	15.0	N	56	200-8x25	72	15.9	71	20
PL434770N	PL	43x47	0.70	17.8	N	56	100-4x25	105	9.4	78	20
RF PL415270N	PL	41x52	0.70	17.8	N	55 Brute®	100-4x25	105	9.9	74	20
PL385859N	PL	38x58	0.59	15.0	N	60	200-8x25	56	17.3	71	20
PL385870N	PL	38x58	0.70	17.8	N	60	100-4x25	105	10.3	74	20

RF RevPro Fit

- PL ProLite
- N Natural

Brute, Glutton and Slim Jim are registered trademarks of Rubbermaid



RevPro Lite

Coreless Can Liners continues



NEW ITEM #	PRODUCT CODE	DIMENSIONS (IN)	GA (MIL)	GA (MIC)	COLOR	CAPACITY (GAL)	BAGS/CASE	CASE/PALLET	NET CASE WT (LBS)	DRYLOAD RATING (LBS)	RECYCLED CONTENT (UP TO %)
PL222530BK	PL	22x25	0.30	7.6	BK	7-10	1000-20x50	72	11.0	36	30
PL222545BK	PL	22x25	0.45	11.4	BK	7-10	500-10x50	105	8.3	44	30
PL242430BK	PL	24x24	0.30	7.6	BK	7-10	1000-20x50	72	11.5	36	30
PL233130BK	PL	23x31	0.30	7.6	BK	12-18	1000-20x50	72	14.3	37	30
PL233145BK	PL	23x31	0.45	11.4	BK	12-18	500-10x50	105	10.7	45	30
PL243230BK	PL	24x32	0.30	7.6	BK	12-18	1000-20x50	72	15.4	36	30
PL303630BK	PL	30x36	0.30	7.6	BK	20-30	500-20x25	105	10.8	36	30
PL303635BK	PL	30x36	0.35	8.9	BK	20-30	250-10x25	105	6.3	36	30
PL303645BK	PL	30x36	0.45	11.4	BK	20-30	250-10x25	105	8.1	46	30
PL303659BK	PL	30x36	0.59	15.0	BK	20-30	250-10x25	105	10.6	55	70
PL303670BK	PL	30x36	0.70	17.8	BK	20-30	200-8x25	105	10.1	73	70
RF PL284558BK	PL	28x45	0.58	14.7	BK	Slim Jim®	250-10x25	105	12.2	55	70
RF PL284570BK	PL	28x45	0.70	17.8	BK	Slim Jim®	250-10x25	72	14.7	64	70
PL333945BK	PL	33x39	0.45	11.4	BK	33	250-10x25	105	9.7	46	30
PL333959BK	PL	33x39	0.59	15.0	BK	33	250-10x25	72	12.7	59	70
PL333970BK	PL	33x39	0.70	17.8	BK	33	150-6x25	105	9.0	73	70
RF PL304359BK	PL	30x43	0.59	15.0	BK	Slim Jim® w/ handles	250-10x25	105	12.7	59	70
RF PL364745BK	PL	36x47	0.45	11.4	BK	44 Brute®	250-10x25	105	12.7	46	30
RF PL364759BK	PL	36x47	0.59	15.0	BK	44 Brute®	250-10x25	72	16.6	59	70
RF PL364770BK	PL	36x47	0.70	17.8	BK	44 Brute®	200-8x25	105	15.8	73	70
PL404645BK	PL	40x46	0.45	11.4	BK	40-45	250-10x25	72	13.8	55	30
PL404659BK	PL	40x46	0.59	15.0	BK	40-45	250-10x25	72	18.1	64	70
PL404670BK	PL	40x46	0.70	17.8	BK	40-45	100-4x25	105	8.6	72	70
PL434759BK	PL	43x47	0.59	15.0	BK	56	200-8x25	72	15.9	71	70
PL434770BK	PL	43x47	0.70	17.8	BK	56	100-4x25	105	9.4	78	70
RF PL415270BK	PL	41x52	0.70	17.8	BK	55 Brute®	100-4x25	105	9.9	74	70
PL385859BK	PL	38x58	0.59	15.0	BK	60	200-8x25	56	17.3	71	70
PL385870BK	PL	38x58	0.70	17.8	BK	60	100-4x25	105	10.3	74	70
RF PL233145BU	PL	23x31	0.45	11.4	BU	12-18	500-10x50	105	10.7	45	20
RF PL284570BU	PL	28x45	0.70	17.8	BU	Slim Jim®	250-10x25	72	14.7	64	20
PL404670BU	PL	40x46	0.70	17.8	BU	40-45	100-4x25	105	8.6	73	20
RF PL284570GN	PL	28x45	0.70	17.8	GN	Slim Jim®	250-10x25	72	14.7	64	20
RF PL364770GN	PL	36x47	0.70	17.8	GN	44 Brute®	200-8x25	105	15.8	73	20

RF RevPro Fit

- PL ProLite
- BK Black
- BU Blue
- GN Green

Brute, Glutton and Slim Jim are registered trademarks of Rubbermaid



Battleship Gray

Flat Pack Can Liners



NEW ITEM #	OLD ITEM #	PRODUCT CODE	DIMENSIONS (IN)	GA (MIL)	COLOR	CAPACITY (GAL)	BAGS/CASE	CASE/PALLET	NET CASE WT (LBS)	RECYCLED CONTENT (UP TO %)
FF333913GY	RF333913G	FF	33x39	1.30	GY	33	100	88	11.2	92
FF333917GY	RF333917G	FF	33x39	1.70	GY	33	100	88	14.6	92
FF404613GY	RF404613G	FF	40x46	1.30	GY	40-45	100	88	15.9	92
FF404617GY	RF404617G	FF	40x46	1.70	GY	40-45	100	64	20.9	92
FF434713GY	RF434713G	FF	43x47	1.30	GY	56	100	80	17.5	92
FF434717GY	RF434717G	FF	43x47	1.70	GY	56	100	56	22.9	92
FF385813GY	RF385813G	FF	38x58	1.30	GY	60	100	72	19.1	92
FF385817GY	RF385817G	FF	38x58	1.70	GY	60	100	56	25.0	92

Redwood

Flat Pack Can Liners

NEW ITEM #	OLD ITEM #	PRODUCT CODE	DIMENSIONS (IN)	GA (MIL)	COLOR	CAPACITY (GAL)	BAGS/CASE	CASE/PALLET	NET CASE WT (LBS)	RECYCLED CONTENT (UP TO %)
FG242410RW	FS-02	FG	15x9x24	1.00	RW	7-10	500	64	19.2	92
FG243210RW	FS-03	FG	15x9x32	1.00	RW	12-18	500	48	25.6	92
FG3037125RW	FS-05L	FG	16x14x37	1.25	RW	20-30	250	56	23.1	92
FG303715RW	FS-05H	FG	16x14x37	1.50	RW	20-30	250	48	27.8	92
FG3340125RW	FS-06L	FG	20x13x40	1.25	RW	33	100	112	11.0	92
FG334015RW	FS-06H	FG	20x13x40	1.50	RW	33	100	88	13.2	92
FG4048125RW	FS-07L	FG	23x17x48	1.25	RW	40-45	100	80	16.0	92
FG404815RW	FS-07H	FG	23x17x48	1.50	RW	40-45	100	72	19.2	92
FG366015RW	FS-08L	FG	22x14x60	1.50	RW	55	100	64	21.6	92
FG366020RW	FS-08H	FG	22x14x60	2.00	RW	55	100	48	28.8	92
FG434820RW	FS-12	FG	23x20x48	2.00	RW	56	100	48	27.5	92
FG386020RW	FS-09	FG	24x14x60	2.00	RW	60	100	40	30.4	92

- FF Flat Pack/Flat Seal
- FG Flat Pack/Gusset Seal
- GY Gray
- RW Redwood



Cash & Carry

1.5" Cored Roll Can Liners



NEW ITEM #	OLD ITEM #	PRODUCT CODE	DIMENSIONS (IN)	GA (MIL)	COLOR	CAPACITY (GAL)	BAGS/CASE	CASE/PALLET	NET CASE WT (LBS)	RECYCLED CONTENT (UP TO %)
CC187512WH	101	CC	24x33	1.20	WH	12-18	450-6x75	39	28.5	95
CC305015BK	102	CC	30x36	1.50	BK	20-30	300-6x50	39	32.4	84
CC392520YW	104	CC	17x15x45	2.00	YW	39	150-6x25	48	28.8	80
CC602520BK	109	CC	38x58	2.00	BK	60	150-6x25	32	44.1	84

Specialty Bags

NEW ITEM #	OLD ITEM #	PRODUCT CODE	DIMENSIONS (IN)	GA (MIL)	COLOR	CAPACITY (GAL)	BAGS/CASE	CASE/PALLET	NET CASE WT (LBS)	RECYCLED CONTENT (UP TO %)
SP243515BK	904	SP	14x10.5x35	1.50	BK	12-18	100	96	8.6	84
SP303715BK	902	SP	16x14x37	1.50	BK	20-30	100	96	11.1	84
SP333915BK	103	SP	18x15x39	1.50	BK	33	100	96	12.9	84
TOTER96BK	961	SP	30x26x60	1.80	BK	96	100	20	40.3	84
GYLRD50MC	GYLRD96	SP	49.5x42x96	1.50	MC	Gaylord	50	25	43.9	85
GYLRD50CL	GYLRD96C	SP	49.5x42x96	1.50	CL	Gaylord	50	25	43.9	85

Draw Tape

Can Liners

	NEW ITEM #	PRODUCT CODE	DIMENSIONS (IN)	GA (MIL)	COLOR	DRAW TAPE COLOR	CAPACITY (GAL)	BAGS/CASE	CASE/PALLET	NET CASE WT (LBS)	DRYLOAD RATING (LBS)	RECYCLED CONTENT (UP TO %)
RF	DT222475N	DT	22x24	0.75	N	GN	7-10	300-6x50	105	8.9	48	20
RF	DT283890N	DT	28.5x38	0.90	N	GN	23	150-6x25	105	10.3	59	20
RF	DT333870N	DT	33x38	0.70	N	GN	32	150-6x25	105	9.3	46	20
RF	DT364290N	DT	36.5x42.5	0.90	N	GN	44	100-4x25	105	9.7	68	20
RF	DT404290N	DT	40.5x42.5	0.90	N	GN	55	100-4x25	105	10.8	92	20



RF RevPro Fit

- CC Cash & Carry
- SP Specialty Bag
- DT Draw Tape
- BK Black

- WH White
- YW Yellow
- MC Mixed Color
- CL Clear

- N Natural
- GN Green

Consumer Packaged Can Liners

NEW ITEM #	OLD ITEM #	PRODUCT CODE	DIMENSIONS (IN)	GA (MIL)	COLOR	CAPACITY (GAL)	BAGS/UNITS	UNITS/CASE PACK	CASE PACKS/PALLET	UNITS/PALLET	NET UNIT WT (LBS)	NET CASE PACK WT (LBS)	RECYCLED CONTENT (UP TO %)
FH13DSWH40	13-DS40	FH	24x26	0.90	WH	13	40	15	24	360	1.7	22.5	95
FH13WH100	13-JAD	FH	24x31	1.20	WH	13	100-2x50	8	18	144	6.0	48.0	95
FH33BK40	JAD33B	FH	34x38	1.50	BK	33	40	8	30	240	5.2	41.6	84
FH40BK40	JAD40B	FH	37x44	1.50	BK	40	40	8	24	192	6.5	52.0	84
FH55BK20	JAD55B	FH	36x56	1.50	BK	55	20	8	32	256	4.0	32.0	84
FH55CL60	DL55C	FH	36x56	1.50	CL	55	60-2x30	4	24	96	12.1	48.4	85
CB42BK20	325020B	CB	32x50	3.00	BK	42	20	6	24	144	6.7	40.2	84
CB55BK15	365615B	CB	36x56	3.00	BK	55	15	6	24	144	6.4	38.4	84



Contractor Bags

Heavy Duty

NEW ITEM #	OLD ITEM #	PRODUCT CODE	DIMENSIONS (IN)	GA (MIL)	COLOR	CAPACITY (GAL)	BAGS/CASE	CASE/PALLET	NET CASE WT (LBS)	RECYCLED CONTENT (UP TO %)
CB325020BK	325020B	CB	32x50	3.00	BK	42	20	192	6.7	84
CB325050BK	325050B	CB	32x50	3.00	BK	42	50	84	16.8	84
CB365615BK	365615B	CB	36x56	3.00	BK	55	15	144	6.4	84

- FH Farm & Home
- CB Contractor Bag
- BK Black
- WH White
- CL Clear





redefine possible

At Revolution™, we're redefining what's possible with a unique approach to sustainability that embraces the entire plastics life cycle.

In addition to making high quality plastics for commercial applications, we also collect and recycle plastic film materials to create a continuous circle of sustainability.

This holistic approach to production delivers effective, scalable solutions that meet your needs today, while helping you adopt more sustainable practices for the future.

812.234.2724

cs-th@revolutioncompany.com

[revolutioncompany.com](https://www.revolutioncompany.com)